

A Comparative Evaluation of the Anticancer Properties of European and American Elderberry Fruits

Julie M. Thole,^{1,*} Tristan F. Burns Kraft,² Lilly Ann Sueiro,² Young-Hwa Kang,³ Joell J. Gills,³ Muriel Cuendet,³ John M. Pezzuto,^{3,†} David S. Seigler,¹ and Mary Ann Lila²

¹Department of Plant Biology and ²Division of Nutritional Sciences, University of Illinois at Urbana-Champaign, Urbana; and ³Department of Medicinal Chemistry and Pharmacognosy, University of Illinois at Chicago, Chicago, Illinois

ABSTRACT European elderberry (*Sambucus nigra*), recognized in Europe for its health-promoting properties for many generations, is known to contain a range of anthocyanins, flavonoids, and other polyphenolics that contribute to the high antioxidant capacity of its berries. American elderberry (*Sambucus canadensis*), on the other hand, has not been cultivated, bred, and promoted as a medicinal plant like its better-characterized European counterpart. In this study, aqueous acetone extracts of the berries from these two species were fractionated and tested in a range of assays that gauge anticarcinogenic potential. Both cultivated *S. nigra* and wild *S. canadensis* fruits demonstrated significant chemopreventive potential through strong induction of quinone reductase and inhibition of cyclooxygenase-2, which is indicative of anti-initiation and antipromotion properties, respectively. In addition, fractions of *S. canadensis* extract showed inhibition of ornithine decarboxylase, an enzyme marker related to the promotion stage of carcinogenesis. Analysis of active fractions using mass spectrometry and liquid chromatography-mass spectrometry revealed, in addition to flavonoids, the presence of more lipophilic compounds such as sesquiterpenes, iridoid monoterpene glycosides, and phytosterols.

KEY WORDS: • bioactivity • flavonoids • iridoid monoterpenes • phenolics • *Sambucus spp.*

INTRODUCTION

IT IS NOW WIDELY KNOWN that many fruits and vegetables contain natural phytochemical compounds with antioxidant, antimicrobial, anti-inflammatory, cardioprotective, and cancer-chemopreventive properties. Berry fruits are particularly rich in flavonoid compounds (including anthocyanins and proanthocyanidins), although other secondary compounds (iridoid glycosides, sesquiterpenes, triterpenes, and phytosterols) from berries also have demonstrated ability to counteract or interfere with the progress of many chronic disease conditions.^{1–3}

European black elderberry (*Sambucus nigra*), frequently consumed in preserves, wine, and juice, has long been recognized in Europe for its nutraceutical value.^{4,5} Anthocyanins make up as much as 1% (dry weight) of *S. nigra*

fruits. The four primary anthocyanins in *S. nigra* have been identified as cyanidin-3-*O*-sambubioside-5-*O*-glucoside, cyanidin-3-*O*-sambubioside, cyanidin-3-*O*-glucoside, and cyanidin-3,5-*O*-diglucoside.^{6–8} Cyanidin-3-*O*-rhamnoglucoside and cyanidin-3-*O*-xyloglucoside are also present. Other flavonoids reported in *S. nigra* fruits include hyperoside, isoquercetin, and rutoside.⁹ These polyphenolic flavonoids are of particular interest due to their putative health-beneficial (anticarcinogenic and antioxidant) properties, as reported also for other types of berry fruits.¹

S. nigra fruits have higher antioxidant capacity than vitamin C or E, are capable of enhancing immune system response through elevated production of cytokines, and have been used in European folk medicine to circumvent the ravages of colds, asthma, arthritis, and even constipation for thousands of years.^{10,11} A product made from *S. nigra* extracts called Sambucol[®] (manufactured by Razei Bar Industries, Ltd., Jerusalem) functions as an effective anti-inflammatory treatment by increasing the production of cytokines *in vivo*. Components of the extract have been cited as therapeutic for patients suffering from a compromised immune system, due to AIDS or chemotherapy.¹² The Sambucol product has been reported to inhibit numerous strains of influenza virus.¹³ *S. nigra* extracts have demonstrated powerful antioxidant activity *in vitro*.¹⁴ Youdim *et al.*¹⁵ demonstrated that anthocyanins from black elderberry could

Manuscript received May 12, 2005. Revision accepted August 30, 2005.

Address reprint requests to: Mary Ann Lila, Department of Natural Resources and Environmental Sciences, Division of Nutritional Sciences, University of Illinois at Urbana-Champaign, 1201 South Dornier Drive, 1021 Plant Sciences Lab, Urbana, IL 61801, E-mail: imagemal@uiuc.edu

*Present address: Danforth Plant Science Center, Washington University, St. Louis, MO 63130.

†Present address: School of Pharmacy and Pharmaceutical Sciences, Purdue University, 575 Stadium Mall Drive, West Lafayette, IN 47907.

be taken up by endothelial cells, which were subsequently effectively protected against oxidative stress. Recent studies have demonstrated that the anthocyanins from elderberries are absorbed unchanged in their glycosylated forms in humans.¹⁶

Based on this diverse base of anecdotal, epidemiological, and laboratory-based experimental evidence, the black elderberry has been well established as a medicinal species in Europe and has been the subject of intensive breeding research (to amplify anthocyanin content) and controlled cultivation in plantations harvested for both the pigment and purported health benefits of the berries.

The native American species of elderberry, *Sambucus canadensis*, has not been cultivated, bred, and promoted as a medicinal plant like its better-characterized European cousin. Most native elderberry plants currently exist in the wild, although they have been incorporated to some extent into landscape settings as a plant that attracts birds and other wildlife, and the fruits of this species have also been used in wines, jams, and pastries. In Brazilian folk medicine, *S. canadensis* leaves, flowers, and berries have been used historically to treat respiratory and pulmonary disorders. In addition, extracts from the plant provide moderate antibacterial and antifungal activity.¹⁷

While the European cropped species contains primarily four anthocyanins, *S. canadensis* contains seven. In addition to the four present in *S. nigra*, *S. canadensis* fruits also accumulate cyanidin 3-*O*-(6-*O*-*E*-*p*-coumaroyl-2-*O*- β -*D*-xylopyranosyl)- β -*D*-glucopyranoside-5-*O*- β -*D*-glucopyranoside, cyanidin 3-*O*-(6-*O*-*Z*-*p*-coumaroyl-2-*O*- β -*D*-xylopyranosyl)- β -*D*-glucopyranoside-5-*O*- β -*D*-glucopyranoside, and cyanidin 3-*O*-(6-*O*-*E*-*p*-coumaroyl-2-*O*- β -*D*-xylopyranosyl)- β -*D*-glucopyranoside.^{7,8} Although anthocyanins are only one of the phytochemical groups purported to be involved in phytomedicinal bioactivity, the presence of a more diversified range in the native American elderberry introduces the possibility that different nutraceutical potential may be realized in this species.

In this report, we compare the phytochemical content and biological activity of extracts from *S. nigra* and *S. canadensis*, using a range of chemoprevention bioassays to gauge activity against the initiation and promotion stages of carcinogenesis. Our objective was to determine whether the native American elderberry has potential for development as an alternative medicinal crop. To our knowledge, neither species of elderberry has been previously screened specifically in terms of cancer-chemopreventive properties.

MATERIALS AND METHODS

Plant materials

S. nigra fruits plantation-cultivated in Austria were obtained from Artemis International, Inc. (Fort Wayne, IN). Ripe fruits of *S. canadensis* were collected in the wild from Piatt and Lee Counties, Illinois. Fruits were stored at -80°C until use.

General materials

Cellulose-type Toyopearl polymer HW-40F (TP; Tosohaas, Bioseparation Specialists, Montgomeryville, PA) and silica gel 60 (Sigma Chemical, St. Louis, MO) were used for liquid vacuum chromatography (LVC). Thin-layer chromatography (TLC) was carried out on aluminum plates pre-coated with silica gel 60 (0.2 mm thickness, particle size 2–25 μm , pore size 60 \AA Sigma). All solvents (Fisher Scientific, Pittsburgh, PA) were of reagent grade.

Extraction and fractionation of elderberry compounds

Frozen fruit was extracted by blending 300 g aliquots of fruit in 70% aqueous acetone (1 L) at room temperature and filtering the extract with cheesecloth to remove seeds and other solid material; this process was repeated three times. Acetone was removed under vacuum at 40°C , and the resulting liquid was lyophilized to obtain a dry crude extract (1 kg of fruit from each species yielded 160 g of dry crude extract). A portion of the dry crude extract (50 g) was dissolved in water and fractionated using LVC by passing it over a TP column (70 mm column diameter with a medium-pore-size fritted glass filter) to yield five fractions (TP1–TP5). Fractions (1 L) were eluted with water (TP1), 50% aqueous methanol (TP2), 100% methanol (TP3), 100% acetone (TP4), and 50% aqueous acetone (TP5). Methanol and acetone were removed under vacuum at 40°C , and the remaining aqueous portions were lyophilized (Figs. 1 and 2). Fractions were then analyzed by silica gel TLC (ethyl acetate:methanol:water, 79:11:10 by volume) and two spray reagents (vanillin-HCl and dichromate reagent); after spraying, plates were heated at 100°C until color developed. These sprays allow for visual monitoring of proanthocyanidins (which turn pink when exposed to the vanillin-HCl reagent and heat) and organic compounds (such as sugars, which react with the dichromate reagent and turn black). All fractions were then tested for anticancer potential using cyclooxygenase (COX)-1, COX-2, quinone reductase (QR), and ornithine decarboxylase (ODC) assays, as described below.

Fractions that demonstrated positive activity (TP3 and TP4 for both *S. nigra* and *S. canadensis*) were combined (parent fraction) and further fractionated with LVC on silica gel 60 (SGLVC).¹⁸ Approximately 1 g of the parent fraction was dissolved in methanol and mixed with 25 g of silica gel 60 using a mortar and pestle, and the methanol was evaporated. The mixture was added to a column containing 75 g of silica gel 60 and washed with petroleum ether. A total of 22 fractions (75 mL each; SGLVC1–SGLVC22) were eluted with solvents in the following order: 100% petroleum ether; 1:1 petroleum ether:ethyl acetate; 100% ethyl acetate; ethyl acetate mixed with increasing amounts of 1:1 methanol:water (1, 2, 5, 7, 9, 12, 15, 20, 30, 35, 40, 50, 60, 70, 80, 90, 100%); 100% methanol; and 100% water (Figs. 1 and 2). Solvents were removed under vacuum at 40°C , analyzed using TLC, and tested in assays. The same procedure

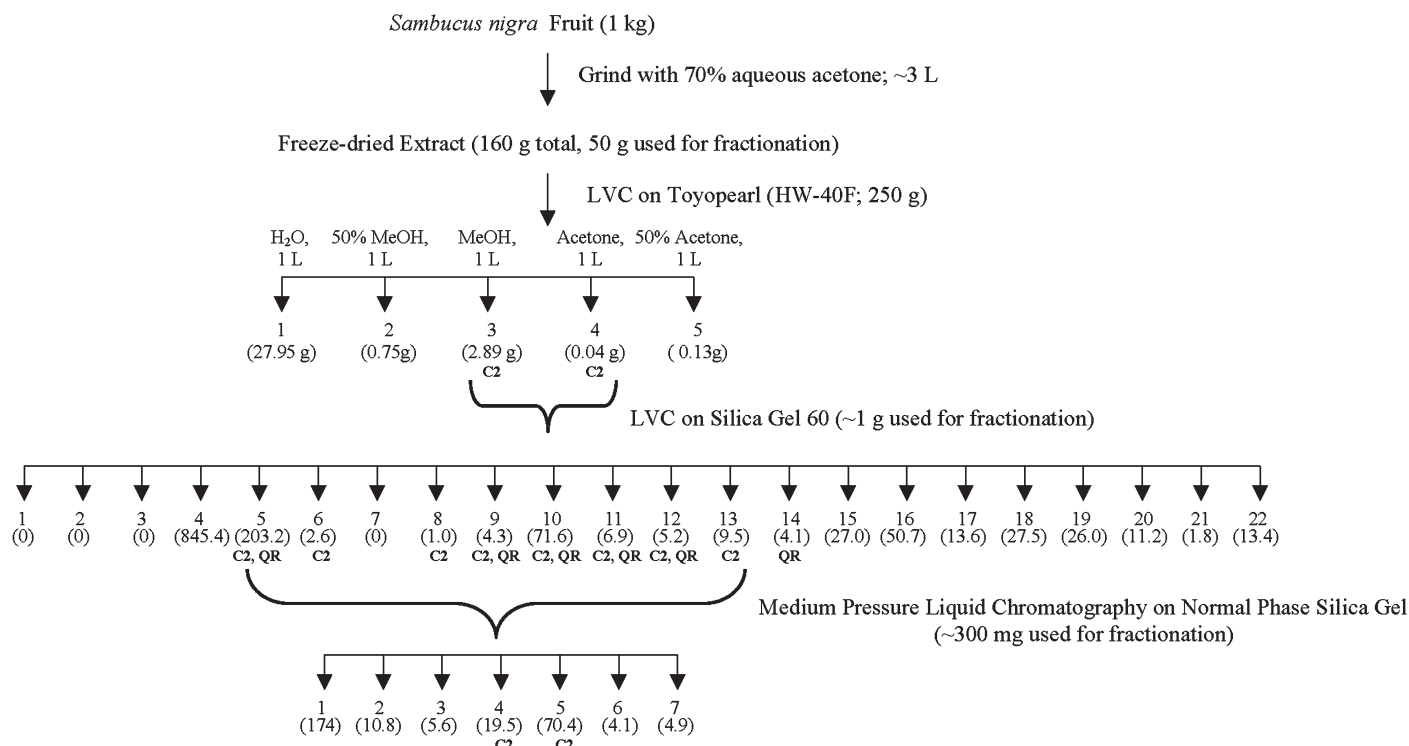


FIG. 1. The fractionation sequence used to separate compounds from *S. nigra* (European elderberry). Fractions that demonstrated significant activity in various anticancer assays [QR and COX-2 (C2)] are indicated. Solvents used to fractionate with SGLVC are fraction 1 (petroleum ether), fraction 2 (1:1, petroleum ether:ethyl acetate), fraction 3 (ethyl acetate), fractions 4–20 [increasing amounts of 50% aqueous methanol (MeOH) in ethyl acetate], fraction 21 (MeOH), and fraction 22 (water); all fractions were 75 mL. SGLVC fractions 5–13 were combined, and about 300 mg of this combination was fractionated using MPLC with a normal-phase silica gel support and increasing amounts of MeOH in water. Mass (in mg) of each SGLVC and MPLC fraction is shown in parentheses below the fraction number.

of TP LVC followed by SGLVC was used separately for both *S. nigra* and *S. canadensis* fruit.

Active fractions from silica gel LVC were then combined and further purified by medium performance liquid chromatography (MPLC). For *S. nigra*, SGLVC5–SGLVC13 (SGLVC fractions from the combination of TP3 and TP4) were combined, dissolved in petroleum ether and ethyl acetate, and purified using MPLC on a normal-phase silica gel column (Merck, grade 9385, 230–400 mesh, 60 Å, 1.5 × 50 cm; Aldrich, Milwaukee, WI) with a gradient of increasing proportions of methanol in water resulting in 138 fractions (Fig. 1). Based on similarity in TLC, these 138 fractions were grouped together in seven fractions for chemical analysis and testing in assays. For *S. canadensis*, SGLVC5–SGLVC13 (fractions from TP3 and TP4) were combined and purified using MPLC on a C-18 reverse-phase column (Bondesil, 40 μm particle size, 1.5 × 50 cm; Varian, Harbor City, CA) with a gradient of increasing proportions of methanol in water resulting in 153 fractions (Fig. 2). Based on similarity in TLC, these 153 fractions were grouped together into 12 fractions for chemical analysis and testing in assays. For both species, approximately 300 mg of sample was used for MPLC.

Assays

Samples for all bioassays were diluted to a concentration of 4 mg/mL in dimethyl sulfoxide.

COX. Both COX assays (COX-1 and COX-2) were done by measuring prostaglandin E₂ production from arachidonic acid using an enzyme-linked immunosorbent assay method as described by Cuendet and Pezzuto¹⁹ and Waffo-Teguio *et al.*²⁰ and by measuring prostaglandin F_{2α} production from arachidonic acid using the COX Inhibitor Screening Assay (Cayman Chemicals, Ann Arbor, MI). Indomethacin was used as a positive control for the prostaglandin E₂ measurements, and SC-560 (COX-1 inhibitor) and DuP-697 (COX-2 inhibitor) were used for prostaglandin F_{2α} measurements (Cayman). Results were expressed as a percentage relative to control (solvent-treated) samples and are an average of two replicates.

QR. For the evaluation of samples as inducers of QR, cultured mouse Hepa 1c1c7 cells were used as described previously.^{21,22} Bromoflavone was the positive control. Induc-

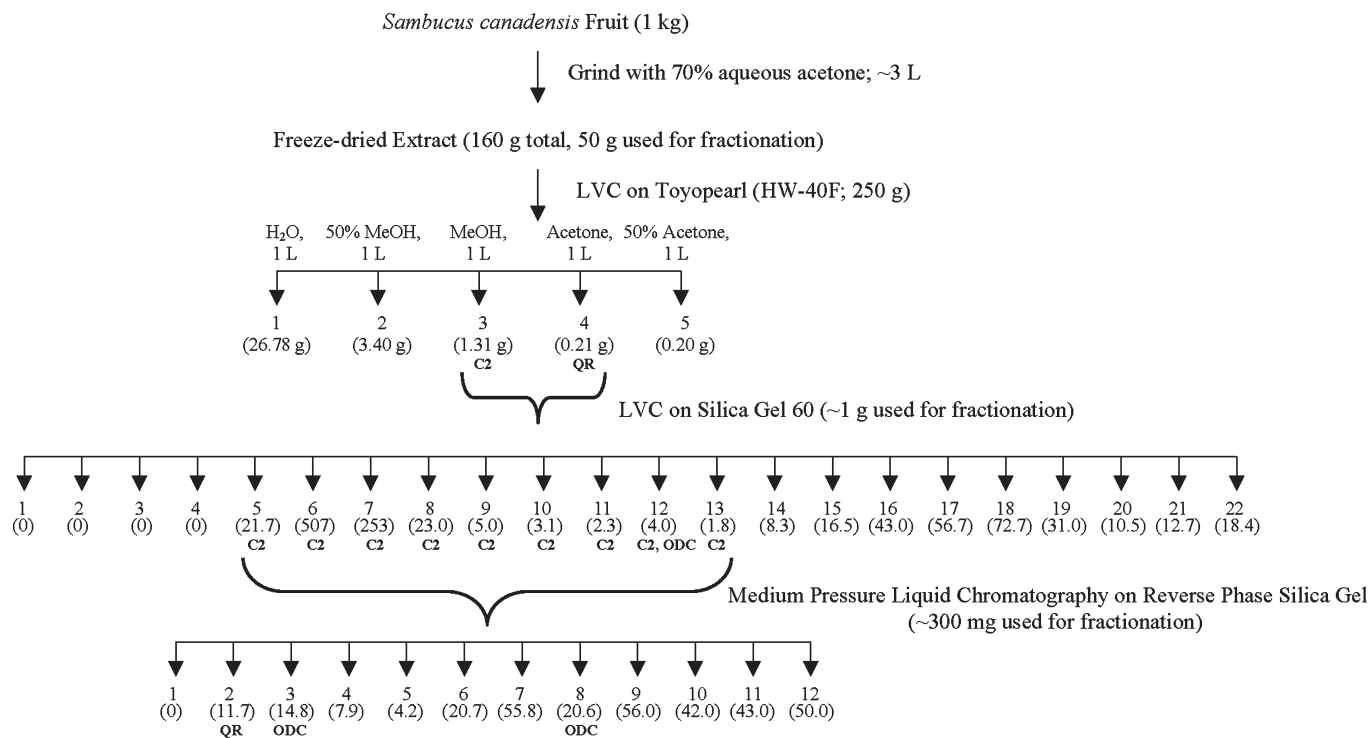


FIG. 2. The fractionation sequence used to separate compounds from *S. canadensis* (American elderberry). Fractions that demonstrated significant activity in various anticancer assays [QR, COX-2 (C2), and ODC] are indicated. Solvents used to fractionate with SGLVC are fraction 1 (petroleum ether), fraction 2 (1:1, petroleum ether:ethyl acetate), fraction 3 (ethyl acetate), fractions 4–20 [increasing amounts of 50% aqueous methanol (MeOH) in ethyl acetate], fraction 21 (MeOH), and fraction 22 (water); all fractions were 75 mL. SGLVC fractions 5–13 were combined, and about 300 mg of this combination was fractionated using MPLC with a reverse-phase silica gel support and increasing amounts of methanol in water. Mass (in mg) of each SGLVC and MPLC fraction is shown in parentheses below the fraction number.

tion of QR activity was calculated from the ratio of specific enzyme activities of sample-treated cells in comparison with a solvent control, and CD values ($\mu\text{g}/\text{mL}$, the concentration of sample needed to double QR induction) were generated based on the average of two replicates.

ODC. An *in vitro* ODC assay was conducted. Methods for cell culture and for treating the cells with sample were described in Kandil *et al.*²³ except that sulforaphane was used as a positive control, samples were tested at a concentration of 20 $\mu\text{g}/\text{mL}$, and the JB6 mouse epidermal cell line was used. The measurement of ^{14}C release from L-[1- ^{14}C]ornithine was essentially done according to the procedure of Lichti and Gottesman,²⁴ as described previously.²⁵ All samples were run in duplicate.

Chemical analysis

Mass spectrometry (MS). Electron impact (EI) MS of the bioactive MPLC fractions was carried out on a 70-VSE (A) mass spectrometer (VG, Manchester, UK) in the Mass Spectrometry Laboratory of the School of Chemical Sciences, University of Illinois, Urbana, IL. The EI voltage was 70

eV, and continuous mass spectra were recorded over the range m/z 100–2,000 with a scan time of 9.9 s and an interscan delay of 0.1 s. Samples were run in positive mode.

Liquid chromatography-MS (LC-MS). Identification of some compounds from SGLCV fractions was accomplished using LC-MS [in the electrospray ionization (ESI) mode] following the methods of Yousef *et al.*²⁶ The samples were filtered through surfactant-free cellulose acetate filters (pore size, 0.45 μm ; Corning Inc., Corning, NY) before injection.

RESULTS

Activity of extracts from fruits

COX inhibition. All fractions were screened for inhibition against both COX-1 and COX-2 at 10 $\mu\text{g}/\text{mL}$, and those samples that showed greater than 60% inhibition were considered active. The *S. nigra* crude extract produced from the 70% aqueous acetone extraction exhibited no significant activity in either COX assay. However, fractions TP3 and TP4 showed 87% and 86% inhibition in the COX-2 assay, respectively; neither significantly inhibited COX-1. SGLCV

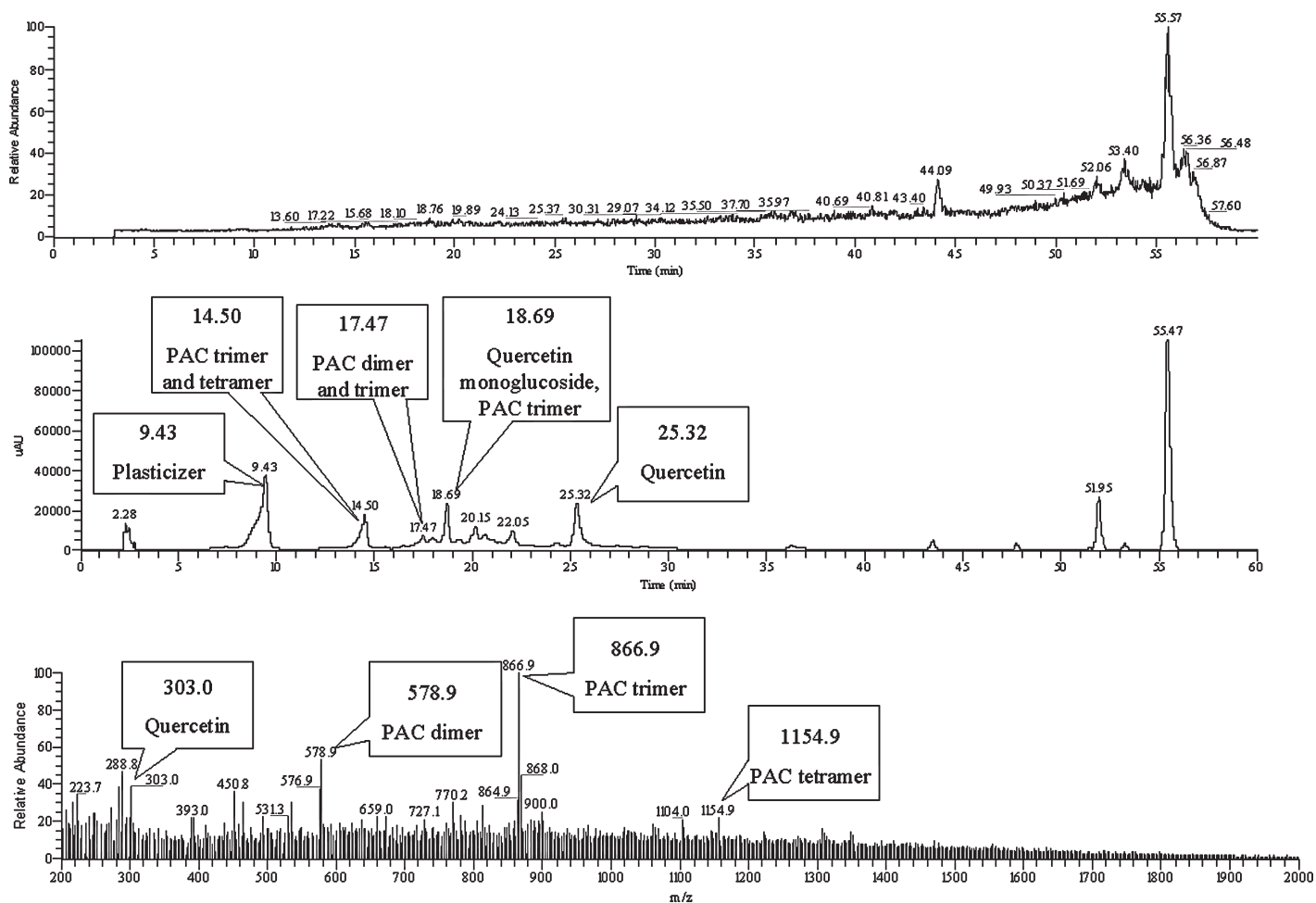


FIG. 3. LC-MS spectra from *S. nigra* fraction 11 from SGLVC (SGLVC11): (**top**) total-ion current, (**middle**) HPLC, and (**bottom**) ESI-MS. PAC, proanthocyanidin.

fractions (SGLVC5–SGLVC13) also demonstrated a range of activity in the COX-2 assay (63–98% inhibition). Activity of these same samples for COX-1 inhibition was minimal. Additionally, MPLC fractions 4 and 5 were active in the COX-2 assay (82% and 73% inhibition, respectively), but were not significantly active in the COX-1 assay (Fig. 1). It is of particular value to have COX-2 inhibitory activity with little or no COX-1 activity.²⁷ COX-1 is a constitutively expressed enzyme (*e.g.*, the gastric mucosa) and plays an important role in gastrointestinal maintenance. COX-2, on the other hand, is inducible at sites of cancer and inflammation.²⁸

The *S. canadensis* crude extract produced from the 70% aqueous acetone extraction also exhibited no significant activity in either COX assay. Fraction TP3 exhibited borderline bioactivity in the COX-2 assay (58% inhibition) but did not significantly inhibit COX-1. SGLVC fractions (SGLVC5–SGLVC13) also inhibited COX-2 (58–84% inhibition), but were not significantly active in the COX-1 assay (Fig. 2).

QR induction. All fruit fractions and subfractions were screened for activity in the QR assay at 10 and 20 $\mu\text{g}/\text{mL}$, and those samples that at least doubled QR activity at a concentration $\leq 10 \mu\text{g}/\text{mL}$ were considered significantly active. For *S. nigra* fruit, the crude extract was not active in the QR assay, but SGLVC5, SGLVC9–SGLVC12, and SGLVC14 exhibited significant activity in the QR assay by doubling QR activity when screened at 10 $\mu\text{g}/\text{mL}$ (Fig. 1). The crude extract from *S. canadensis* was also not active, but fraction TP4 exhibited significant activity in the QR assay. In addition, MPLC fraction 2 from *S. canadensis* fruit exhibited significant QR induction by doubling activity at 2.5 $\mu\text{g}/\text{mL}$ (Fig. 2).

ODC inhibition. All fruit fractions and subfractions were screened for activity in an *in vitro* ODC assay at 20 $\mu\text{g}/\text{mL}$. Samples that inhibited ODC activity by 50% were considered active. Significant ODC activity was only found in fractions of *S. canadensis* fruit. SGLVC fraction 12 (SGLVC12) and MPLC fractions 3 and 8 inhibited ODC activity more than 50% when tested at 20 $\mu\text{g}/\text{mL}$ (Fig. 2).

Active fraction composition analysis

MS. EI-MS was used to analyze the COX-active MPLC fractions from *S. nigra* (fractions 4 and 5). The EI-MS of MPLC fraction 4 had major peaks at 248.2 *m/z* and 414.4 *m/z*, and the EI-MS of MPLC fraction 5 had a major peak at 248.3 *m/z*. The 414.4 *m/z* peak is consistent with compounds having an empirical formula of C₂₉H₅₀ and in this case is most likely β -sitosterol. The 248.2 *m/z* peak is probably a sesquiterpene, which is consistent with an empirical formula of C₁₆H₂₄O₂. Therefore, MPLC fraction 4 from *S. nigra* probably contains a mixture of β -sitosterol and a sesquiterpene, and MPLC fraction 5 contains mostly a sesquiterpene.

LC-MS. LC-MS analysis revealed active fractions were composed not only of flavonoids but also lipophilic compounds such as iridoid monoterpene glycosides. Figure 3 is an example spectrum of *S. nigra* SGLCV11. LC-MS analysis of active vacuum chromatography fractions of *S. nigra* indicates that they contain quercetin (303.1 *m/z*), quercetin monoglucoside (464.9 *m/z*), gallicocatechin (606.9 *m/z*), and a series of proanthocyanidins (dimer, 579.0 *m/z*; trimer, 866.9 *m/z*; and tetramer 1154.9 *m/z*), among other unidentified compounds. LC-MS of spectra of active *S. canadensis* vacuum chromatography fractions correlates with the presence of quercetin, epigallocatechin (306.8 *m/z*), quercetin monoglucoside, and monotropein (390.9 *m/z*), in addition to other unidentified components.

Several compounds were also eluted in the lipophilic portion of the chromatographic series from both *S. nigra* and *S. canadensis* that could not conclusively be identified. However, compounds with a molecular weight (300–400 *m/z*) correlate closely with iridoid monoterpene glycosides, which are known to exist in this genus.^{29,30} Examples of possible iridoid monoterpene glycosides include 7-dehydrologanin (388.0 *m/z*) and sweroside (358.0 *m/z*).

DISCUSSION

Bioactivity relevant to inhibition of both the initiation and promotion stages of carcinogenesis was detected in fruit extracts from *S. nigra* and *S. canadensis*. The medicinal value of elderberries in most previous applications has been linked to the concentrated anthocyanin pigments in the fruits. Recently, anthocyanins in elderberry extracts were found to spare the antioxidant power of vitamin E in laboratory rats, although there was no effect on cholesterol levels,³¹ and the anthocyanins in extracts were also considered responsible for protection against oxidative stress.¹⁵

In this study, the anticancer bioactivity of elderberries, especially against the initiation and promotion stages of carcinogenesis, was found in fractions of fruit extract that contained not only phenolics (quercetin, quercetin monoglucoside, proanthocyanidins, and epigallocatechin) but also nonphenolic compounds (probably iridoid monoterpene glycosides, sesquiterpenes, and phytosterols). Furthermore, this

range of compounds and bioactivity was found in both the wild American elderberry (*S. canadensis*) and the well-recognized, medicinally important European elderberry (*S. nigra*).

ACKNOWLEDGMENTS

We gratefully acknowledge the support of the National Institutes for Health, National Center for Complementary and Alternative Medicine (NIH NCCAM Grant AT00404-02), and the U.S. Drug Administration/Midwest Advanced Food Manufacturing Alliance. Scholarship support for J.M.T. was provided through a Colgate Palmolive Undergraduate Research Fellowship and the SURE Fellowship, Environmental Council, University of Illinois. Additionally, we are thankful to Jan Mills at Artemis International, Inc. (Fort Wayne, IN) for donation of *S. nigra* fruit and appreciate John Ebinger and Randy Rogers for providing *S. canadensis* fruit.

REFERENCES

- Häkkinen SH, Kärenlampi SO, Heinonen IM, Mykkänen HM, Törrönen AR: Content of the flavonols quercetin, myricetin, and kaempferol in 25 edible berries. *J Agric Food Chem* 1999;47:2274–2279.
- Schmidt BM, Howell AB, McEniry B, Knight CT, Seigler D, Erdman JW Jr, Lila MA: Effective separation of potent antiproliferation and antiadhesion components from wild blueberry (*Vaccinium angustifolium* Ait.). *J Agric Food Chem* 2004;52:6433–6442.
- Kraft TFB, Schmidt BM, Knight CTG, Cuendet M, Gills JJ, Kang YH, Pezzuto JM, Seigler DS, Lila MA: Chemopreventive potential of wild blueberry fruits in multiple stages of carcinogenesis. *J Food Sci* 2005;70(Suppl):S159–S166.
- Börngen S: Pflanzen helfen heilen, VEB Verlag Volk und Gesundheit, Berlin, 1990.
- Uphof JCT: *Dictionary of Economic Plants*, Engelmann, Weinheim (Bergstrasse), Germany, 1959.
- Chandra A, Rana J, Li Y: Separation, identification, quantification, and method validation of anthocyanins in botanical supplement raw materials by HPLC and HPLC-MS. *J Agric Food Chem* 2001;49:3515–3521.
- Inami O, Tamura I, Kikuzaki H, Nakatani N: Stability of anthocyanins of *Sambucus canadensis* and *Sambucus nigra*. *J Agric Food Chem* 1996;44:3090–3096.
- Nakatani N, Kikuzaki H, Hikida J, Ohba M, Inami O, Tamura I: Acylated anthocyanins from fruits of *Sambucus canadensis*. *Phytochemistry* 1995;38:755–757.
- Mills J: Artemis elderberry: from field to food. In: *Proceedings of the Natural Colors and Flavors Meeting, Tampa, FL*, Intertech, Portland, ME, 1998, pp. 1–10.
- Kilham C: Health benefits boost elderberry. *HerbalGram* 2000;50:55–57.
- Kilham C: Elderberries grow beyond folklore into mainstream functional foods. *Prepared Foods* 2001;(June):39–41.
- Barak VS, Birkenfeld S, Halperin T, Kalickman I: The effect of herbal remedies on the production of human inflammatory and anti-inflammatory cytokines. *Isr Med Assoc J* 2002;4:944–946.

13. Zakay-Rones Z, Varsano N, Zlotnik M, Manor O, Regev L, Schlesinger M, Mumcuoglu M: Inhibition of several strains of influenza virus in vitro and reduction of symptoms by an elderberry extract (*Sambucus nigra* L.) during an outbreak of influenza B Panama. *J Altern Complement Med* 1995;1:361–369.
14. Pool-Zobel BL, Bub A, Schroeder N, Rechkemmer G: Anthocyanins are potent antioxidants in model systems but do not reduce endogenous oxidative DNA damage in human colon cells. *Eur J Nutr* 1999;38:227–234.
15. Youdim KA, Martin A, Joseph JA: Incorporation of elderberry anthocyanins by endothelial cells increases protection against oxidative stress. *Free Radic Biol Med* 2000;29:51–60.
16. Milbury PE, Cao GH, Prior RL, Blumberg J: Bioavailability of elderberry anthocyanins. *Mech Aging Dev* 2002;30:997–1006.
17. Holetz FB, Pessini GL, Sanches NR, Cortez DAG, Nakamura CV, Filho BPD: Screening of some plants used in the Brazilian folk medicine for the treatment of infectious diseases. *Mem Inst Oswaldo Cruz* 2002;97:1027–1031.
18. Millar JG: Liquid chromatography. In: *Methods in Chemical Ecology, Vol. 1: Chemical Methods* (Millar JG, Haynes KF, eds.), Chapman and Hall, New York, 1998, pp. 38–83.
19. Cuendet M, Pezzuto JM: The role of cyclooxygenase and lipoxygenase in cancer chemoprevention. *Drug Metab Drug Interact* 2000;17:109–157.
20. Waffo-Teguo P, Lee D, Cuendet M, Merillon JM, Pezzuto JM, Kinghorn AD: Two new stilbene dimer glucosides from (*Vitis vinifera*) cell cultures. *J Nat Prod* 2001;64:136–138.
21. Prochaska HJ, Santamaria AB: Direct measurement of NAD(P)H:quinone reductase from cells cultured in microtiter wells: a screening assay for anticarcinogenic enzyme inducers. *Anal Biochem* 1988;169:328–336.
22. Gerhäuser C, You M, Liu J, Moriarty RM, Hawthorne M, Mehta RG, Moon RC, Pezzuto JM: Cancer chemopreventive potential of sulforamate, a novel analogue of sulforaphane that induces phase 2 drug-metabolizing enzymes. *Cancer Res* 1997;57:272–278.
23. Kandil FE, Smith MAL, Rogers RB, Pépin M, Song LL, Pezzuto JM, Seigler DS: Composition of a chemopreventive proanthocyanidin-rich fraction from cranberry fruits responsible for the inhibition of 12-O-tetradecanoylphorbol-13-acetate (TPA)-induced ornithine decarboxylase (ODC) activity. *J Agric Food Chem* 2002;50:1063–1069.
24. Lichti U, Gottesman U: Genetic evidence that a phorbol ester tumor promoter stimulates ornithine decarboxylase activity by a pathway that is independent of cyclic AMP-dependent protein kinases in CHO cells. *J Cell Physiol* 1982;113:433–439.
25. Gerhäuser C, Mar W, Lee SK, Suh N, Luo Y, Kosmeder H, Moriarty RM, Luyengi L, Kinghorn AD, Fong HHS, Mehta RG, Constantinou A, Moon RC, Pezzuto JM: Rotenoids mediate potent chemopreventive activity through transcriptional regulation of ornithine decarboxylase. *Nat Med* 1995;1:260–266.
26. Yousef GG, Seigler DS, Grusak MA, Rogers RB, Knight CT, Kraft TF, Erdman JW Jr, Lila MA: Biosynthesis and characterization of ¹⁴C-enriched flavonoid fractions from plant cell suspension cultures. *J Agric Food Chem* 2004;52:1138–1145.
27. Lee E, Park EJ, Cuendet M, Axelrod F, Chavez PI, Fong HHS, Pezzuto JM, Kinghorn AD: Cyclooxygenase-inhibitory and antioxidant constituents of the aerial parts of *Antirhea acutata*. *Bioorg Med Chem Lett* 2001;11:1565–1568.
28. Turini ME, DuBois RN: Cyclooxygenase-2: a therapeutic target. *Annu Rev Med* 2002;53:35–57.
29. Gross G-A, Sticher O: Isoswerosid, ein neues Secoiridoidglykosid aus den Wurzeln des Zwergholunders *Sambucus ebulus* L. (Caprifoliaceae). *Helv Chim Acta* 1986;69:1113–1119.
30. Gross G-A, Sticher O, Anklin C: Ein neues Esteriridoidglykosid aus *Sambucus ebulus* L. (Caprifoliaceae). *Helv Chim Acta* 1986;69:156–162.
31. Frank J, Kamal-Eldin A, Lundh T, Maatta K, Torronen R, Vessby B: Effects of dietary anthocyanins on tocopherols and lipids in rats. *J Agric Food Chem* 2002;50:7226–7230.